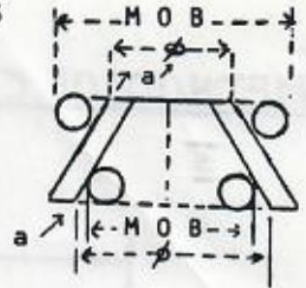


Acute Dimensions

CALCULATED DIMENSIONS FOR MEASUREMENT OVER BALLS
(Add or Subtract from Part Diameter)

Acute Angles ($90^\circ \pm a^\circ$)

BALL DIAMETERS



a°	.0625	.1250	.2500	.3750	.5000	.6250	.7500	.8750	1.0000
0	.1250	.2500	.5000	.7500	1.0000	1.2500	1.5000	1.7500	2.0000
1	.1261	.2522	.5044	.7566	1.0088	1.2610	1.5132	1.7654	2.0176
2	.1272	.2544	.5088	.7633	1.0177	1.2722	1.5266	1.7810	2.0355
3	.1283	.2567	.5134	.7701	1.0269	1.2836	1.5403	1.7970	2.0537
4	.1295	.2590	.5181	.7771	1.0362	1.2952	1.5543	1.8133	2.0724
5	.1307	.2614	.5228	.7842	1.0456	1.3070	1.5684	1.8298	2.0913
6	.1319	.2638	.5276	.7914	1.0553	1.3191	1.5829	1.8467	2.1106
7	.1331	.2662	.5325	.7988	1.0651	1.3314	1.5977	1.8640	2.1303
8	.1344	.2688	.5376	.8064	1.0752	1.3440	1.6128	1.8816	2.1504
9	.1356	.2713	.5427	.8140	1.0854	1.3567	1.6281	1.8994	2.1708
10	.1369	.2739	.5479	.8219	1.0958	1.3698	1.6438	1.9177	2.1917
11	.1383	.2766	.5532	.8299	1.1065	1.3831	1.6598	1.9364	2.2131
12	.1396	.2793	.5587	.8380	1.1174	1.3968	1.6761	1.9555	2.2349
13	.1410	.2821	.5643	.8464	1.1286	1.4107	1.6929	1.9750	2.2572
14	.1425	.2849	.5699	.8549	1.1399	1.4249	1.7099	1.9949	2.2799
15	.1439	.2879	.5758	.8637	1.1516	1.4395	1.7274	2.0153	2.3032
16	.1454	.2908	.5817	.8726	1.1635	1.4543	1.7452	2.0361	2.3270
17	.1469	.2939	.5878	.8817	1.1757	1.4696	1.7635	2.0574	2.3514
18	.1485	.2970	.5941	.8911	1.1882	1.4852	1.7823	2.0793	2.3764
19	.1501	.3002	.6004	.9007	1.2009	1.5012	1.8014	2.1017	2.4019
20	.1517	.3035	.6070	.9105	1.2140	1.5175	1.8211	2.1246	2.4281
21	.1534	.3068	.6137	.9206	1.2275	1.5343	1.8412	2.1481	2.4550
22	.1551	.3103	.6206	.9309	1.2413	1.5516	1.8619	2.1722	2.4826
23	.1569	.3138	.6277	.9415	1.2554	1.5692	1.8831	2.1969	2.5108
24	.1587	.3174	.6349	.9524	1.2699	1.5874	1.9049	2.2224	2.5399
25	.1606	.3212	.6424	.9636	1.2848	1.6060	1.9272	2.2484	2.5697
26	.1625	.3250	.6500	.9751	1.3001	1.6252	1.9502	2.2752	2.6003
27	.1644	.3289	.6579	.9869	1.3159	1.6449	1.9738	2.3028	2.6318
28	.1665	.3330	.6660	.9991	1.3321	1.6651	1.9982	2.3312	2.6643
29	.1686	.3372	.6744	1.0116	1.3488	1.6860	2.0232	2.3604	2.6977
30	.1707	.3415	.6830	1.0245	1.3660	1.7075	2.0490	2.3905	2.7320
31	.1729	.3459	.6918	1.0378	1.3837	1.7296	2.0756	2.4215	2.7674
32	.1752	.3505	.7010	1.0515	1.4020	1.7525	2.1030	2.4535	2.8040
33	.1776	.3552	.7104	1.0656	1.4209	1.7761	2.1313	2.4865	2.8418
34	.1800	.3600	.7201	1.0802	1.4403	1.8004	2.1605	2.5206	2.8807
35	.1825	.3651	.7302	1.0953	1.4605	1.8256	2.1907	2.5558	2.9210
36	.1851	.3703	.7406	1.1109	1.4813	1.8516	2.2219	2.5922	2.9626
37	.1878	.3757	.7514	1.1271	1.5028	1.8785	2.2542	2.6299	3.0057
38	.1906	.3812	.7625	1.1438	1.5251	1.9064	2.2877	2.6690	3.0503
39	.1935	.3870	.7741	1.1611	1.5482	1.9353	2.3223	2.7094	3.0965
40	.1965	.3930	.7861	1.1791	1.5722	1.9653	2.3583	2.7514	3.1445
41	.1996	.3992	.7985	1.1978	1.5971	1.9964	2.3957	2.7950	3.1943
42	.2028	.4057	.8115	1.2172	1.6230	2.0287	2.4345	2.8402	3.2460
43	.2062	.4124	.8249	1.2374	1.6499	2.0623	2.4748	2.8873	3.2998
44	.2097	.4194	.8389	1.2584	1.6779	2.0973	2.5168	2.9363	3.3558
45	.2133	.4267	.8535	1.2803	1.7071	2.1338	2.5606	2.9874	3.4142